

# WINSHAM E-LETTER

No.575

15th November, 2019

Hi All,

I have been driven 'bonkers' over the last couple of weeks! The well trusted and tried software which I have been using for the last seventeen years for the transfer of web site files to the server finally gave up the ghost in the face of the ever growing complexity of the internet and regrettably, its need for ever increasing security requirements. Now I am faced with the immutably problem for 'an old dog needing to learn new tricks'. So please bear with me if things don't always seem to go as they should. One thing I have learned over the years is that the only way to master new software is to stick at it-eventually one discovers and learns about all the little details that they forget to put on the YouTube videos and the 'Help' pages! However, I should give a plug for 123-Reg, whose support services have been so helpful during this trying time.



## ***Enough of the moaning!***

### **The Parish Council.**

Don't forget that the Parish Council is to hold the first of its monthly surgeries tomorrow (16th November) at the Davies Close Community Centre between 10-11am. If you have any problems or concerns that you wish to tell the Parish Council about, this is a good opportunity.

I wonder why the word 'surgery' is used in the name of the event? Not a needle, bandage, doctor or nurse in sight. Can someone think of a better name? 'Consultation Event' sounds a bit too 'politically correct' for me. What about 'Forum' or 'gossip point'? Any ideas? If you have, send them to the Parish Clerk! I am sure she will be delighted !!

### **Winsham Shop**

Work on the shop is progressing incredibly quickly, and it has been metamorphosed into an empty space in the matter of a couple of days. Kate has put some incredible pictures of the Community Facebook page, and you can see them by clicking on the Facebook logo below. It won't be long before the tiny buds of the shop's regeneration appear, waiting to develop into full bloom well before Christmas (we hope). ***Meanwhile, there is a progress bulletin on the Parish Web site, along with a gentle reminder that money is needed to complete the transformation.*** Meanwhile, have you been to the 'pop-up' shop in the Jubilee Hall? Incredible! A wonderful example of co-operation between the Shop , the Parish Council, and the Jubilee Hall and its users.

**...and the rest.**

Lots more below.

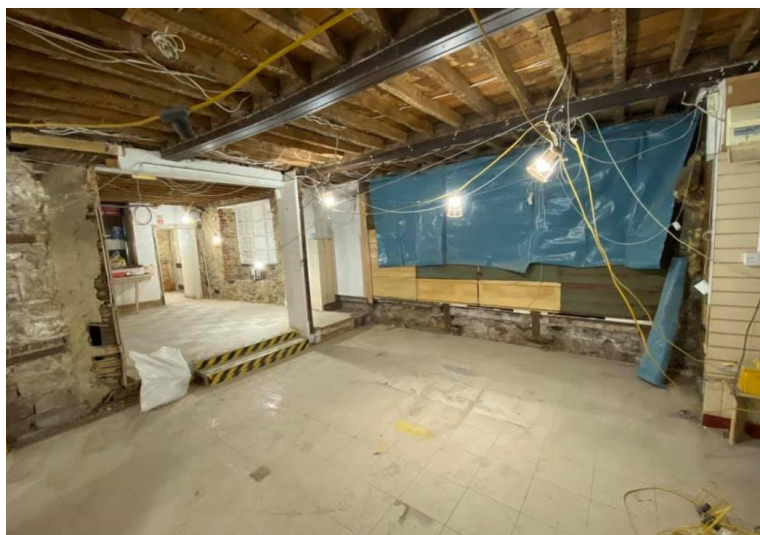
Keep warm and cheerful... only four weeks to the General Election-my cup of happiness overflows!!Think of the revenue the Jubilee Hall earns as a Polling Station!

John



**A new feature: *Each week we will dip into a part of the Winsham Web Museum .***

***This week: Learn about the 'Inns of Winsham'  
Click on the WWM logo on the left.***



***Click on the picture above to see more picture  
of the shop renovation on Facebook***




## **WINSHAM ON THE WEB**



**Parish Council 'Surgery'**

**Davies Close Community Centre  
10-11pm,  
Saturday, 16th November**

**[Click HERE](#)**

<b>Parish Web Site</b>	<b>Christmas Calendar of Events</b>	<a href="#">Click HERE</a>
<b>Jubilee Cafe</b>	<b>Thursday, 21st November, 11.00am</b> <b>Come in from the cold and wet, and enjoy a cup of tea or coffee and a slice of home-made cake for just a £1. And enjoy a natter with friends and neighbours!</b> <b>Visit the Shop Stall, and pop-in to the Pop-Up Shop-it is next door.</b>	<a href="#">Click HERE</a>
<b>WINSHAM VILLAGE SHOP &amp; POST OFFICE</b>	<b>New Progress Bulletin 14th November, 2019</b>	<a href="#">Click HERE</a>
<b>Winsham Music Group</b>	<b>Wednesday, 20th November</b>	<a href="#">Click HERE</a>
<b>Winsham Village Calendar</b>	<b>Pre-order now only by calling Sally Lines on 30168, or...</b>	<a href="mailto:winshamstreetfair@gmail.com">winshamstreetfair@gmail.com</a>
<b>Pop-up-Shop in Jubilee Hall-Parish Office</b>	<b>Pop in to the Pop-up-Shop! Opens 8am , Saturday, 9th November</b>	<a href="#">Click HERE</a>
<b>Winsham Shop Management Committee Applications for Community Shares in Winsham Shop Ltd</b>	<b>Deadline-30th November, 2019</b>  <b>Community Share Prospectus</b>  <b>Application Form</b>	<a href="#">Click HERE</a>  <a href="#">Click HERE</a>  <a href="#">Click HERE</a>
<b>Winsham Street Fair Committee</b>	<b>Santa's Grotto and lighting -up of Christmas Tree Sunday, 8th December, 5.00pm onwards</b>	<a href="#">Click HERE for details</a>
<b>THE BELL</b>	<b>Christmas Lunches Menu and other events inc. Christmas Bingo- 15th November</b>	<a href="#">Click HERE</a>
<b>NEXT WEEK-Dont miss it</b>	<b>'One Night at the Emporium' Jubilee Hall, Friday, 22nd November, 6-9pm</b> <b>Additional Attraction! Dem. of Winsham's Defibrillator will take place in the Committee Room during the evening.</b>	<a href="#">Click HERE for details</a>
<b>Winsham Players</b>	<b>'Revue' Jubilee Hall, Saturday, 14th December, 6.30 for 7.00pm</b>	<a href="#">Click HERE for details</a>
<b>Winsham Horticultural Society</b>	<b>Annual General Meeting 7pm, Friday, 22nd Nov. Sports and Social Club</b>	<a href="#">Click HERE</a>

<b>Winsham Art Club</b>	<b>Autumn programme</b>	<a href="#">Click HERE for details</a>
<b>Clapton &amp; Wayford Film Society</b>	<b>2019-2020 Film Programme</b>	<a href="#">Click Here for details</a>
	<b>Learn Modern and Latin Dance</b>	<a href="#">Click HERE for details</a>
<b>N'bourhood Watch</b>	Watch out for latest Scam	<a href="#">Click HERE</a>
<b>Zoe's Mobile Catering</b>	Monday evenings-Western Way	<a href="#">Click HERE</a>
<b>St.Stephen's Church</b> 	Revised details of, November & December Services. Details of Harvest Thanksgiving celebrations  Fund Raising Coffee Morning 10.30am Wednesday, 27th November in the Church	<a href="#">Click HERE</a>  <a href="#">Click HERE</a>
<b>WINSHAM PARISH COUNCIL</b>	Road Closure notices are sometimes not specific as to dates. This web site (follow link) does give details of actual road closures. <b>Try Link</b> *** <b>Appeals</b> *** <b>Winsham Parish Council Surgeries start on 16th November</b> *** <b>Road Works at Roundham Straight-W. Crewkerne</b> *** <b>Road works at Two Ash Hill</b> *** <b>Road works at South Chard</b> *** <b>Road works at Forton Road</b> *** <b>Road works at Whatley Lane</b> *** New Traffic and Travel Web site	<a href="#">Click HERE- Scroll down as necessary</a>
<b>The NEW Winsham</b>	Support your local suppliers	<a href="#">Click HERE</a>

Market Place		
<b>Your essential Guide to Winsham Parish Web Site Content UPDATED</b>	<b>Please read to get the most from the Winsham Parish Web Site</b>	<a href="#">Click HERE</a>
	<b>Ongoing service information service for older residents, their family and friends and those who care</b>	<a href="#">Click HERE</a>
<b><u>For all newcomers to the Parish</u></b>	WINSHAM'S 'WELCOME PACK'	<a href="#">Click HERE</a>
Somerset Museums UPDATED-a really useful web site.	Gives you details of most of the Museums in Somerset.	<a href="#">Click HERE</a> <b>NEW LINK</b>
	<b>FUTURE EVENTS FOR YOUR DIARY</b>	



**Take a picture of your pet-you never know when you will wish you had!**

**The Winsham e- letter will always help find missing pets.**

[Contact Winsham E-Letter](#)

Sponsored by [Winsham Web Museum](#)

Click [HERE](#) to unsubscribe